



Site characterization report at the seismic station IV.TREG - Tregnago (VR)

Report di caratterizzazione di sito presso la stazione sismica IV.TREG - Tregnago (VR)

Working Group Geology: Paolo MANGANELLO, Sara LOVATI Geophysics: Rodolfo PUGLIA, Giulio BRUNELLI, Alessio LORENZETTI, Sara LOVATI, Paolo MANGANELLO, Marco MASSA	Date: December 2021
Subject: Final report illustrating the site characterization for seismic station IV.TREG	



INDEX

<i>Introduction</i>	3
A. Geological setting	4-12
1. Topographic and geological information	4
2. Geological map	6
3. Lithological map	7
4. Lithotechnical map	8
5. Survey map	9
6. Geological model	10
6.1 General description	10
6.2 Geological section	10
6.3 Subsoil model	11
B. Vs profile	13-18
1. Geophysical Investigations	13
2. Seismic Velocity Model	16
3. Conclusions	18
<i>Acknowledgments</i>	18
<i>References</i>	19
<i>Disclaimer and limits of use of information</i>	21



INTRODUCTION

In this report we present the geological setting and the geophysical measurements and results obtained in the framework of the 2019-2021 agreement between INGV and DPC, called *Allegato B2: Obiettivo 1 - TASK 2: Caratterizzazione siti accelerometrici (Responsabili: G. Cultrera, F. Pacor)* for the site characterization of station IV.TREG (Tregnago).

Location and coordinates are reported in Table 1.

Table 1

CODE	NAME	LAT [°]	LON [°]	ELEVATION [m]
IV.TREG	Tregnago	45.5229 *	11.1608 *	342 **
ADDRESS	Strada Provinciale 10, 37039 Tregnago (VR), Italy			

* Coordinates from ITACA (Nov. 2021) ** Elevation from CTR 10k Regione del Veneto



A. Geological setting

A1. TOPOGRAPHIC AND GEOLOGICAL INFORMATION

Topographic information related to the site are reported in Table 2. Table 3 summarizes all available geological maps from literature for geological analyses.

Table 2

Topography	Description	Topography Class	Morphology Class
	Flat surfaces, isolated slopes and reliefs with slope $i \leq 15^\circ$	T1	Valley centre (VC)

Table 3

Geological map	Source	Scale
IV.TREG	Geological Map of Italy, sheet 49 (Verona)	1:100.000

In Table 4 Geological, Lithological and Lithotechnical Units (according to Seismic Microzonation classification; Technical Commission SM, 2015) are described and are concerned to maps of following chapters. The term “original” means the result comes from a preexisting cartography (Table 3); the term “deduced” means the result comes from an interpretation of a preexisting cartography according to the nomenclature of corresponding cartography.



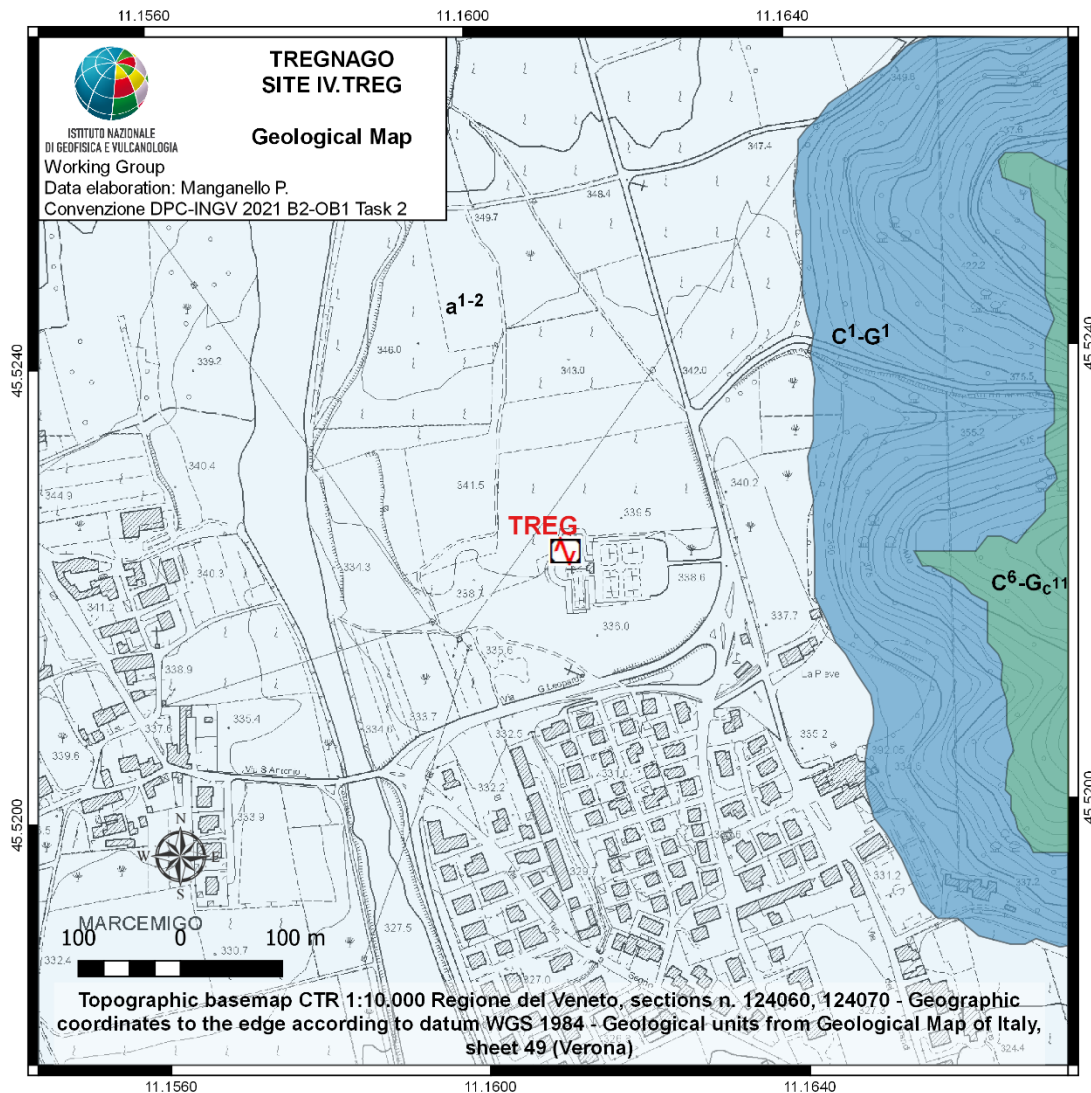
Table 4

GEOLOGICAL UNITS		LITHOLOGICAL UNITS		LITHOTECHNICAL UNITS	
Geological Map of Italy 1:100.000, sheet 49 (Verona) <i>original</i>		Amanti <i>et al.</i> (2008) <i>deduced</i>		(MZS) <i>deduced</i>	
code	description	code	description	code	description
a ¹⁻²	Alluvial deposits	B4	Mixed grain size deposits	GCtf	Gravel-sand-clay mixture
C ¹ -G ¹	Dolostones and dolomitic limestones	A1-A2	Dolomitic limestone, dolostone	SFALS	Fractured/weathered layered alternance of lithotypes
C ⁶ – G ¹¹ _c	Marly limestones	A3	Marly limestone	SFLP	Fractured/weathered rock



A2. GEOLOGICAL MAP

In Figure 1 Geological Map is reported in a 1 km × 1 km square around the station.



Legend

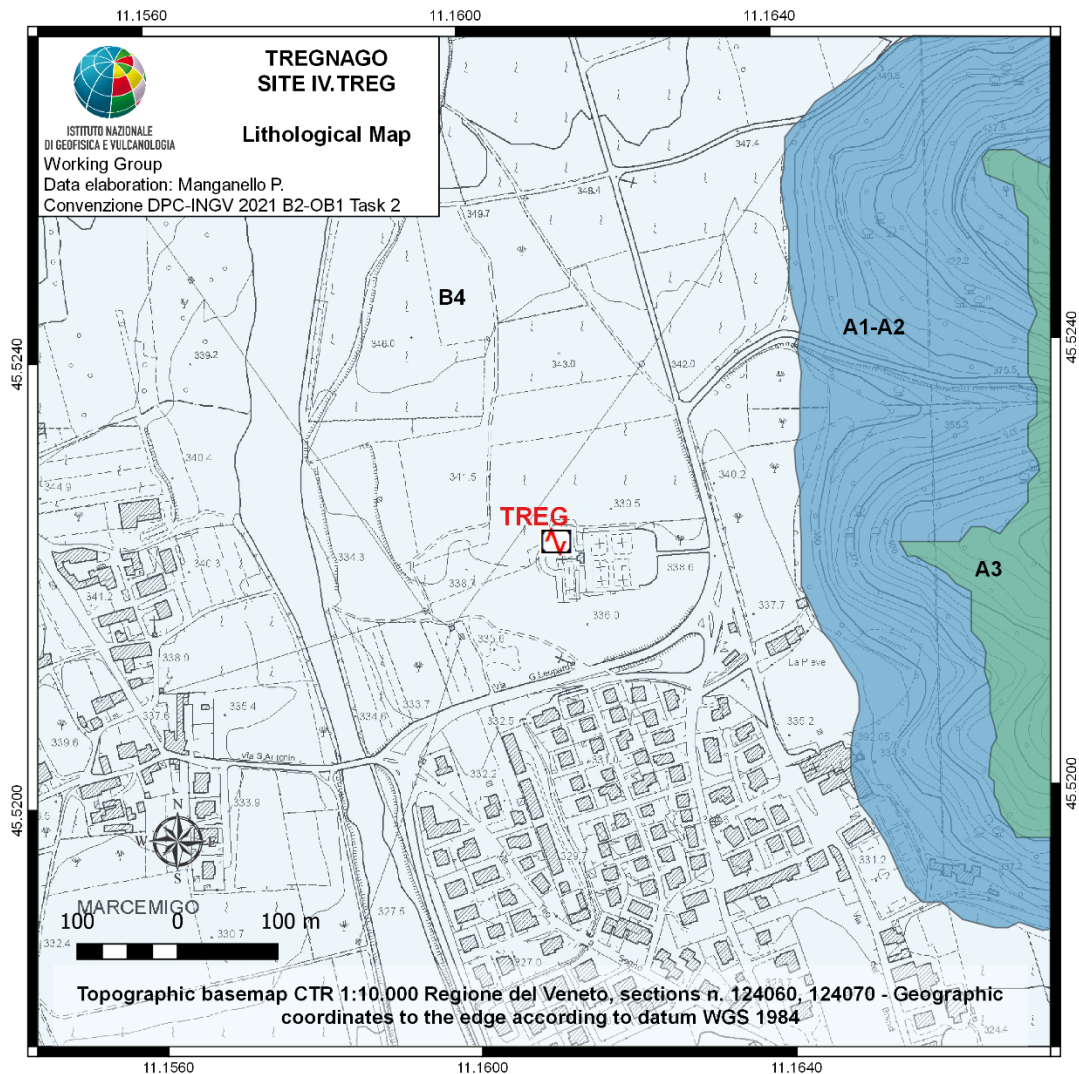
Seismic station Stazione sismica	MARINE FORMATIONS FORMAZIONI MARINE
CONTINENTAL FORMATIONS FORMAZIONI CONTINENTALI	C ¹ -G ¹ - Dolostones and dolomitic limestones (Valanginian ? - Hettangian) C ¹ -G ¹ - Dolomie e calcari dolomiti (Valanginiano ? - Hettangiano)
a ¹⁻² - Alluvial deposits (Holocene) a ¹⁻² - Depositi alluvionali (Olocene)	C ⁶ -Gc ¹¹ - Marly limestones (Cenomanian - Upper Tithonian) C ⁶ -Gc ¹¹ - Calcari marnosi (Cenomaniano - Tithoniano superiore)

Figure 1: Geological map of seismic station IV.TREG. Scale 1:5.000. Geological units come from Geological Map of Italy 1:100.000, sheet 49 (Verona).



A3. LITHOLOGICAL MAP

In Figure 1 Lithological Map is reported in a 1 km × 1 km square around the station.



Legend

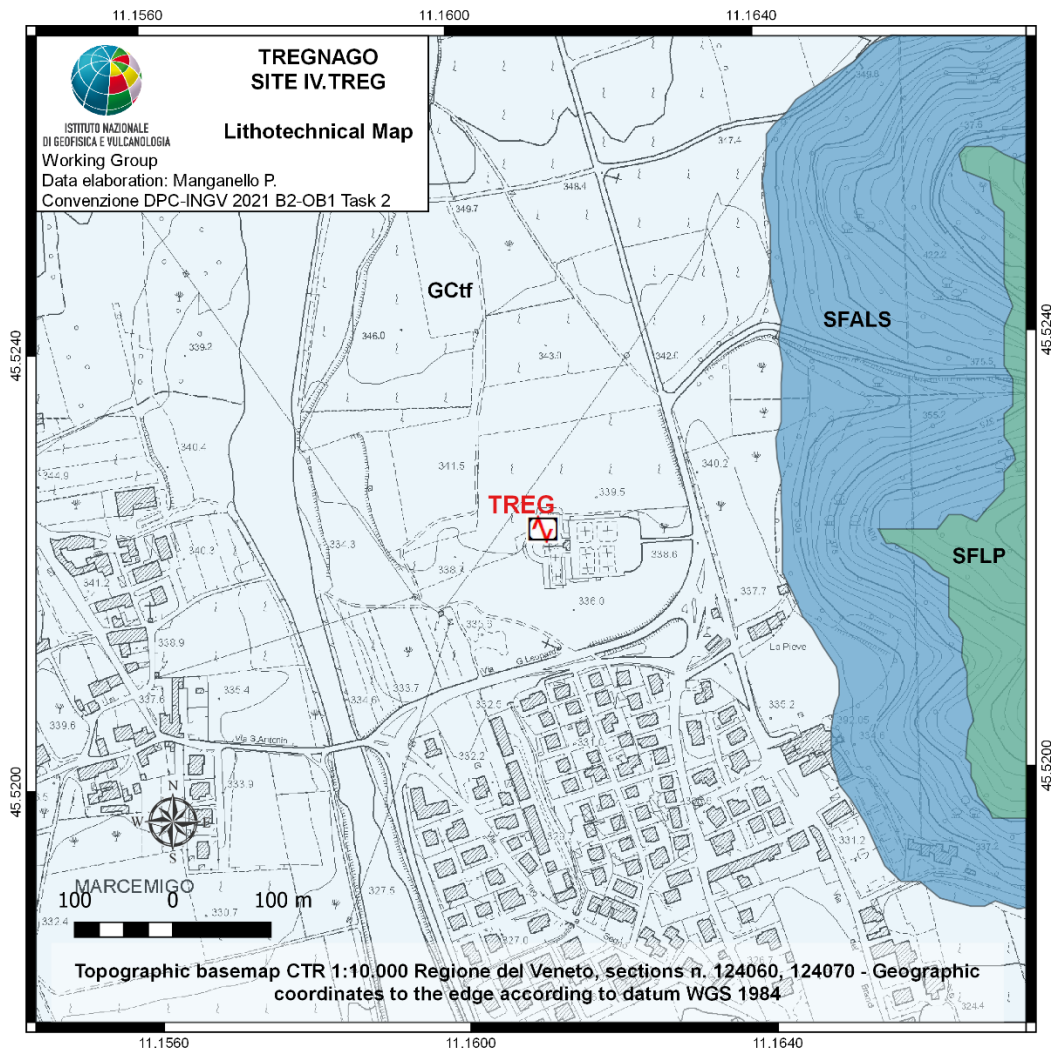
- | | |
|---|--|
| Seismic station
Stazione sismica | A1-A2 - Dolomitic limestone, dolostone
A1-A2 - Calcarei dolomitici, dolomie |
| Lithological units
Unità litologiche | A3 - Marly limestone
A3 - Calcarei marnosi |
| B4 - Mixed grain size deposits
B4 - Depositi a granulometria mista | |

Figure 2: Lithological map of the seismic station IV.TREG. Scale 1:5.000. The codes of the lithological units are assigned according to the nomenclature of the Lithological map of Italy ISPRA 1:100.000 (Amanti *et al.*, 2008).



A4. LITHOTECHNICAL MAP

In Figure 3 Lithotechnical Map is reported in a $1\text{ km} \times 1\text{ km}$ square around the station.



Legend

Seismic station
Stazione sismica

SEDIMENTARY COVER TERRENI DI COPERTURA

Gctf - Gravel-sand-clay mixture (fluvial terrace)
Gctf - Miscela di ghiaia, sabbia e argilla (terrazzo fluviale)

GEOLOGICAL SUBSTRATE SUBSTRATO GEOLOGICO

SFALS - Fractured/weathered layered alternance of lithotypes
SFALS - Alternanza di litotipi, stratificato, fratturato/alterato

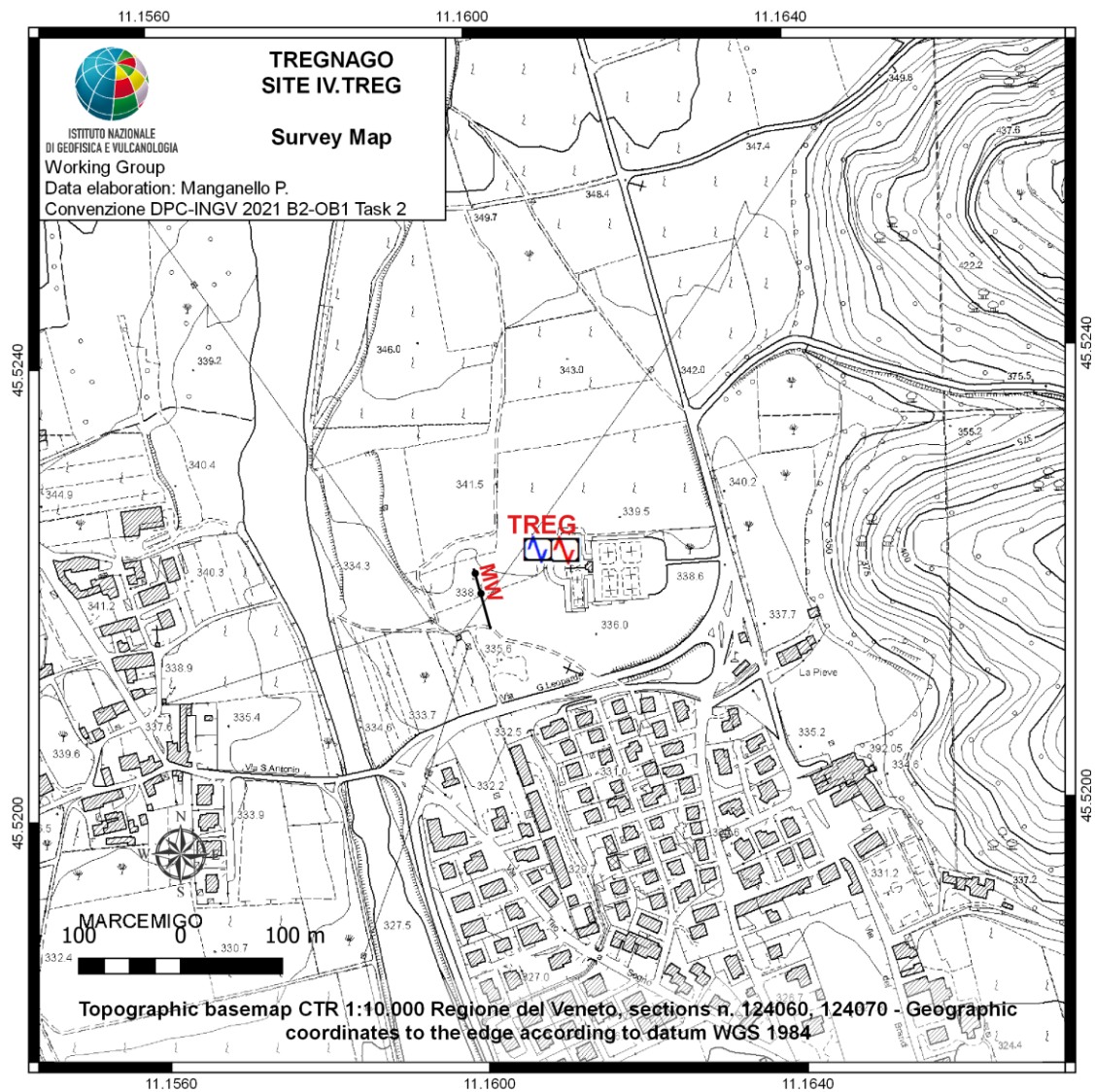
SFLP - Fractured/weathered rock
SFLP - Lapideo fratturato/alterato

Figure 3: Lithotechnical map of the seismic station IV.TREG. Scale 1:5.000. The lithotechnical units are deduced according to the nomenclature of Seismic Microzonation (Technical Commission SM, 2015).




A5. SURVEY MAP

Figure 4 shows the Survey Map reporting both previous investigations and geophysical surveys conducted by INGV Working Group.



Legend

 Seismic station
Stazione sismica

 HVSR

 MASW

Figure 4: Map of the surveys in the surroundings of the station IV.TREG. Scale 1:5.000.



A6. GEOLOGICAL MODEL

6.1 General description

The seismic station IV.TREG is installed in the Tregnago municipality, which is situated in the northeastern sector of Verona Province.

The geological setting of the study area is related to the evolution of Lessini Mountains, which are a tableland located in the western Venetian Region, at the transition between the Fore-Alps and the Po Plain sedimentary basin. The surface geology of Lessini Mountains is mainly characterized by the presence of Mesozoic carbonate rocks. The tectonics of this area is connected to episodes of Mesozoic and early Tertiary extension, late Tertiary contraction and Pliocene-Quaternary block tilting (Zampieri, 2000).

The territory of Tregnago municipality is situated in the Illasi Valley, including part of the valley floor of Illasi torrent and the surroundings ridges with N-S direction, constituted by carbonate rocks (Comune di Tregnago, 2020).

6.2 Geological section

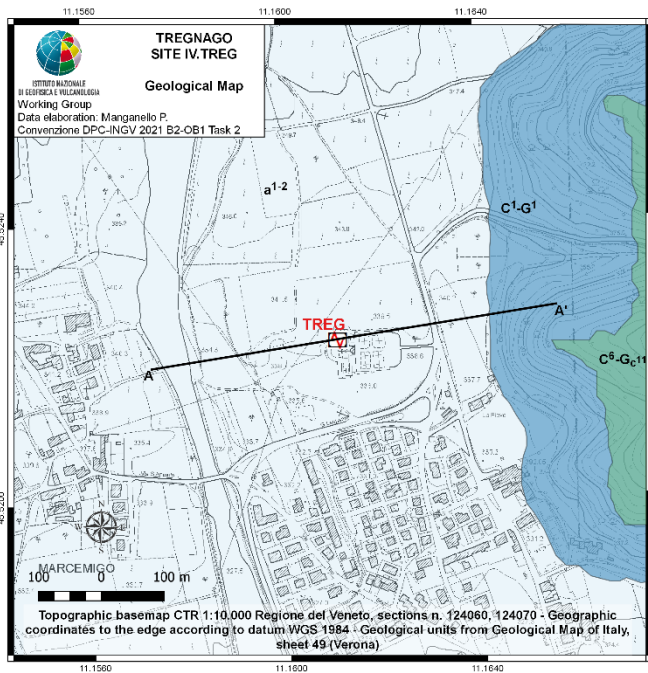
In the surroundings of IV.TREG seismic station there are not boreholes. The WSW-ENE oriented geological section is reported and highlights the geological and structural setting of IV.TREG site. The trace with the location of the section is reported as a black line in the geological map (Fig. 5 upper left).



6.3 Subsoil model

The geological description reported from the surface to the bottom is described in the following part. A subsoil model is built up to a depth of 30 *m* on the basis of geological information (Figure 5 bottom).

The stratigraphic succession shows the presence of alluvial deposits (Holocene) characterized by mixed grain size.



Legend

- | | |
|--|---|
| Seismic station
Stazione sismica | MARINE FORMATIONS
FORMAZIONI MARINE |
| CONTINENTAL FORMATIONS
FORMAZIONI CONTINENTALI | C ¹ -G ¹ - Dolostones and dolomitic limestones (Valanginian ? - Hettangian) |
| a ¹⁻² - Alluvial deposits (Holocene) | C ⁴ -G ⁴ - Dolomie e calcari dolomitici (Valanginiano ? - Hettangiano) |
| a ¹⁻² - Depositi alluvionali (Olocene) | C ⁵ -Gc ¹¹ - Marly limestones (Cenomanian - Upper Tortonian) |
| | C ⁵ -Gc ¹¹ - Calcari marnosi (Cenomaniano - Tortoniano superiore) |

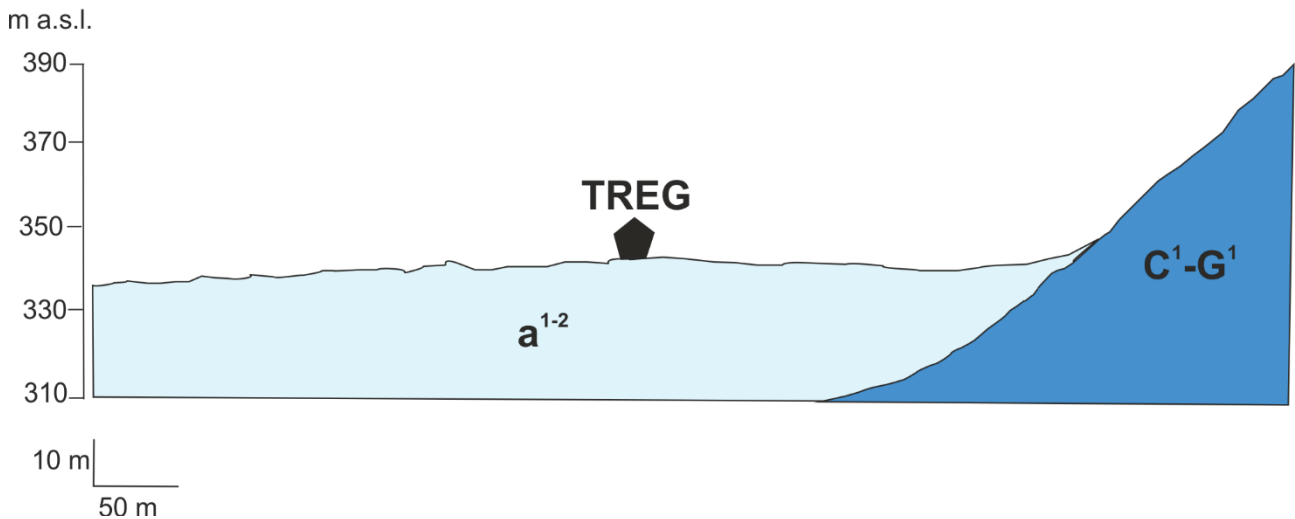
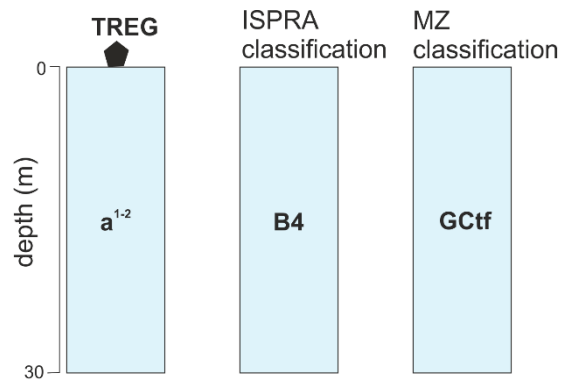


Figure 5: Upper left: Geological map of the study area where is installed IV.TREG seismic station. Upper right: Geological section. Bottom: Subsoil model for the site.



B. V_s profile

B1. GEOPHYSICAL INVESTIGATIONS

Geophysical measurements executed nearby the station TREG of the network IV (INGV, 2006) consist in a) ambient-vibration measurements in single-station configuration and b) Multi-channel Analysis of Surface Waves (MASW) survey (Figure 6), that provide results in terms of H/V curve (HVSr) and in terms of Rayleigh dispersion curve. These curves are inverted to obtain a shear-wave velocity (V_s) profile that, together with the geological study at section A, is suitable for assigning the soil class according to the current Italian seismic code (NTC18) and Eurocode (EC8). Figure 7 shows the location of the station IV.TREG (Latitude 45.5229, Longitude 11.1608 WGS84) installed in the municipality of Tregnago (VR).

Seismic microtremor is acquired using a Reftek-130 24-bits recording system equipped with short-period Lennartz LE-3D/5s sensor and GPS timing. The sampling rate is fixed to 100 Hz, while the gain is set as “high”.

The MASW survey is based on the simultaneous analysis of surface wave traces recorded by an equally spaced array of receivers (Foti *et al.*, 2017). The used acquisition device has been a Geometrics Geode seismograph (24 channel) and the acquisition line consisted in 24 vertical geophones (4.5 Hz natural frequency) with receiver spacing of 2.5 m (Figure 7). Two shots have been performed with offsets equal to 5 and 10 m. This range allows the analysis of a range of wavelengths that guarantee sufficient shallow resolution in order to estimate the $V_{s,30}$ and the site-class according to current building codes (i.e. NTC18 and EC8). The used source has been a sledgehammer striking on a metal plate. The chosen data acquisition parameters have been a time window of 2 s and a sampling frequency of 2 kHz.

The Rayleigh-wave dispersion curve (Figure 9) is estimated by picking the maximum amplitudes on the phase velocity – frequency plot obtained from recorded data. We interpret and assume that the final dispersion curve consists of the fundamental mode of Rayleigh dispersive waves.

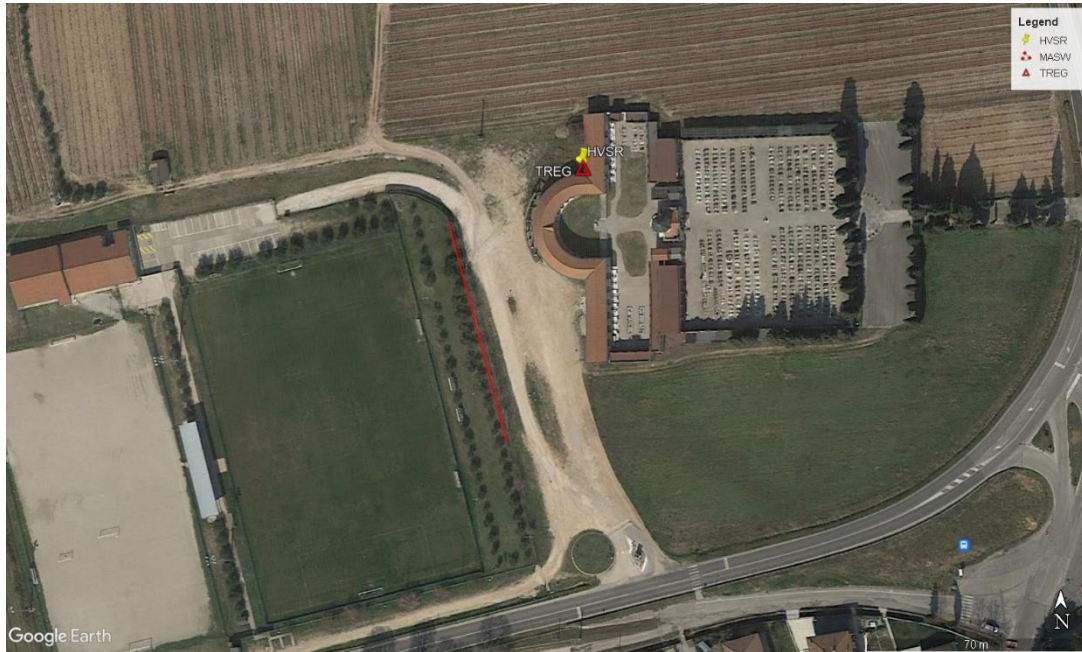


Figure 6: Map of the geophysical measurements performed at the IV.TREG site. The yellow place-marker indicates the single station ambient vibration measurement. The red line indicates the line of 24 geophones used for MASW. The red triangle indicates the IV.TREG accelerometric station (image from Google Earth <http://www.earth.google.com>).



Figure 7: Left: IV.TREG accelerometric station installed in the municipality of Tregnago (VR). Right: MASW acquisition line with 2.5 m receiver spacing.



Figure 8 shows HVSr recorded close to the station IV.TREG, while Figure 9 depicts Rayleigh dispersion curve obtained from the MASW survey.

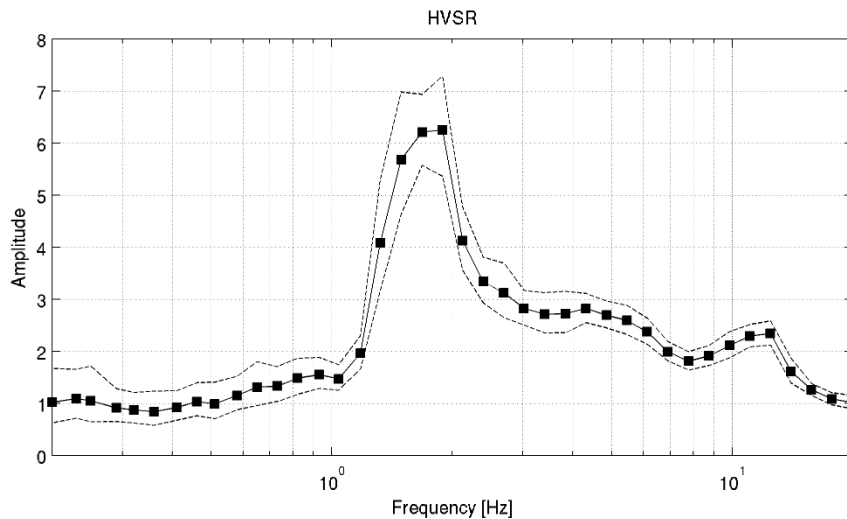


Figure 8: HVSr representative for the site. Dashed lines represent +/- one standard deviation.

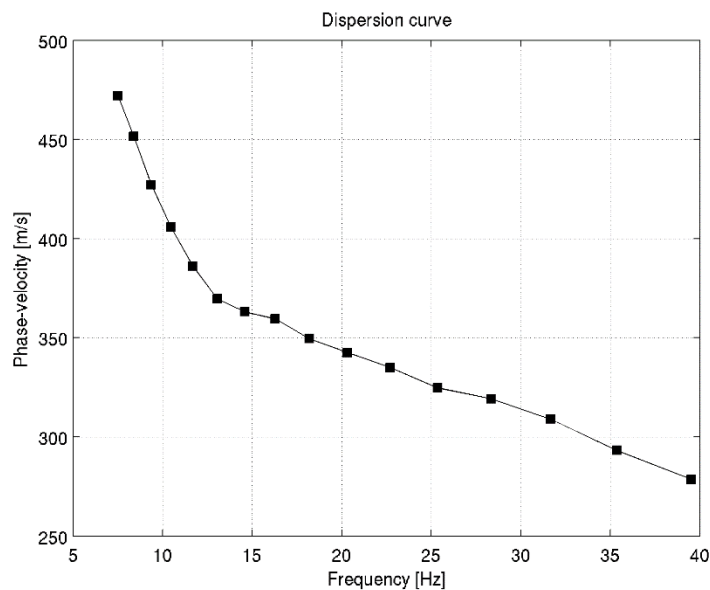


Figure 9: Rayleigh dispersion curve obtained from the MASW survey.



B2. SEISMIC VELOCITY MODEL

The non-linear inversions are performed using the software *joinv6* (Parolai *et al.*, 2005; Giustiniani *et al.*, 2020), which adopt a genetic algorithm (Yamanaka and Ishida, 1996). The forward modelling of Rayleigh wave phase velocities and HVSR curves is performed under the assumption of a vertically heterogeneous 1D Earth model using the modified Thomson-Haskell method proposed by Wang (1999) and following the suggestions of Arai and Tokimatsu (2004) and Tokimatsu *et al.* (1992). The modelling is not restricted to the fundamental mode, preserving the possibility that higher modes participate in simulating the observed dispersion and HVSR curves.

The experimental dispersion curve used as input for inversions is the one estimated from the MASW analysis in the frequency interval 7 - 40 Hz. The experimental HVSR is used between about 1 and 8 Hz. In the left panel of Figure 10 tested models are shown in different colors according to their cost value: the more reliable model (minimum cost) is in white, the models lying inside the 10% range of the minimum cost are in black and the other tested models are shown in grey. In the right-central and right-bottom panels of Figure 10 agreement between experimental and theoretical (grey and open circles, respectively) Rayleigh-wave dispersion curves and HVSR are shown. The agreement is good and, considering the wavelengths related to the dispersion curve frequency range, the V_s profile between about 5 - 70 m is very well constrained. Table 5 reports the minimum-cost shear-wave velocity model.

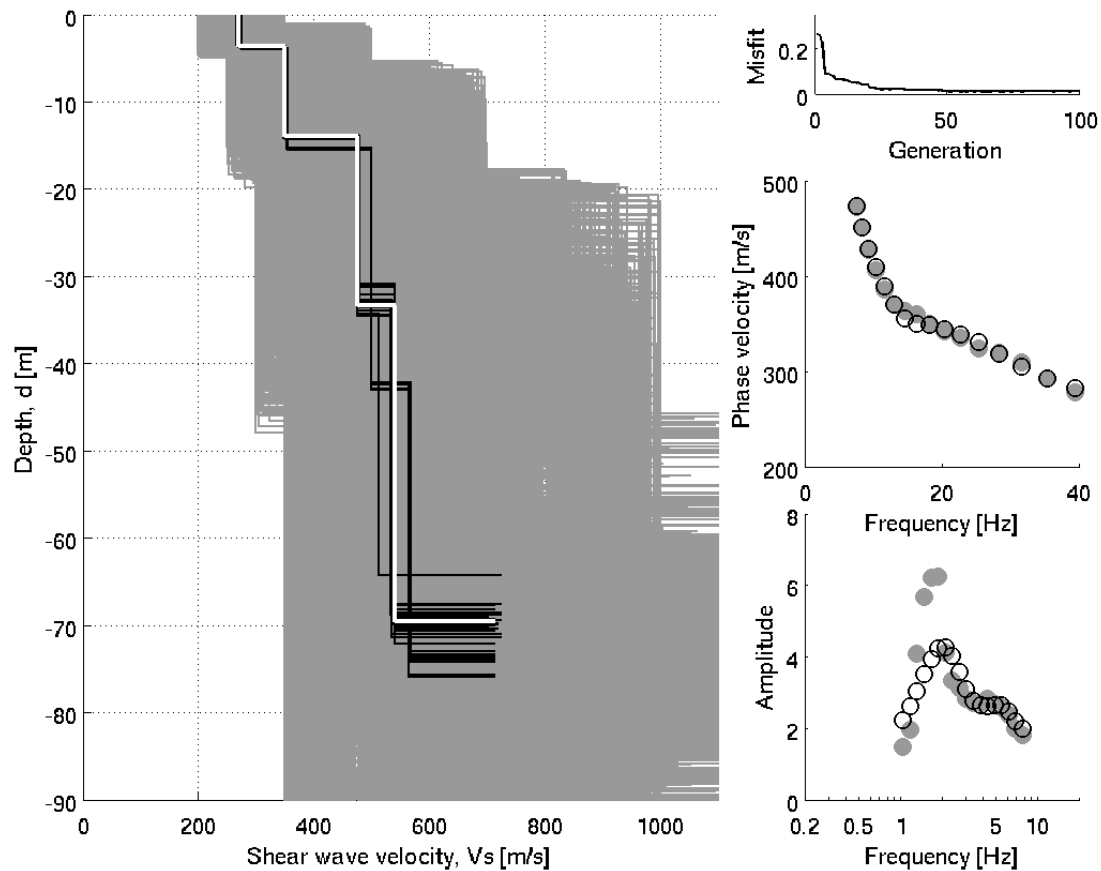


Figure 10: Shear-wave velocity models modeled during the inversion procedure (left panel): tested models (grey lines), the minimum cost model (white line) and models lying inside the minimum cost + 10% range (black lines); the generation values versus misfit (right-upper panel); the fitting of experimental data (grey circles) and empirical values relative to the minimum cost model (white circles) relevant to the dispersion curve (right-central panel) and to HVSr (right-bottom panel).

Table 5: Best-fit shear-wave velocity model

From [m]	To [m]	Thickness [m]	V_s [m/s]
0	3.6	3.6	270
3.6	13.9	10.3	349
13.9	33.4	19.5	476
33.4	69.5	36.1	541
69.5	-	-	714



B3. CONCLUSIONS

As evinced from results of geophysical investigations carried out by INGV Working Group, we can attribute to the Holocene alluvial deposits (a^{1-2}) V_s values between 270 and 476 m/s , compatible with EC8 class assigned at the site according to geological evidences.

According to the current Italian seismic code (NTC18), if the bedrock ($V_s > 800 m/s$) is more than 30 m in depth, the equivalent velocity ($V_{s,eq}$) is equal to the $V_{s,30}$. From Figure 10, the velocity of 800 m/s is reached for an unknown depth, well below the depth of 30 m .

Therefore, in this case, both $V_{s,eq}$ and $V_{s,30}$ are equal to 391 m/s . Of consequence, IV.TREG site is classified in the soil category B, for both the NTC18 and EC8 seismic codes (Table 6).

Table 6: $V_{s,eq}$, $V_{s,30}$ and soil classes

$V_{s,eq} = V_{s,30}$ [m/s]	Soil class (NTC18)	Soil class (EC8)
391	B	B

ACKNOWLEDGEMENTS

Authors wish to thank Stefano Parolai, Paolo Bernardi and Ilaria Dreossi (Istituto Nazionale di Oceanografia e di Geofisica Sperimentale - OGS), for providing us the software “joinv6”, which has been adopted as inversion procedure to estimate the shear-wave velocity model, and for the precious guide in its usage.



REFERENCES

- Amanti M., Battaglini L., Campo V., Cipolloni C., Congi M. P., Conte G., Delogu D., Ventura R., Zonetti C. (2008). "The Lithological map of Italy at 1:100.000 scale: An example of re-use of an existing paper geological map", 33rd International Geological Conference, IEI02310L – 6-14th August, Oslo (Norway).
- Arai H. and Tokimatsu K. (2004). "S-wave velocity profiling by inversion of microtremor H/V spectrum", *Bulletin of the Seismological Society of America*, 94, pp. 53–63.
- Comune di Tregnago (2020). PI n. 3 Variante Parziale – Valutazione di compatibilità idraulica.
- EC8: European Committee for Standardization (2004). Eurocode 8: design of structures for earthquake resistance. P1: General rules, seismic actions and rules for buildings. Draft 6, Doc CEN/TC250/SC8/N335.
- Foti S., Hollender F., Garofalo F., *et al.* (2017). "Guidelines for the good practice of surface wave analysis: a product of the InterPACIFIC project", *Bull Earthquake Eng*, 16, pp. 2367-2420.
- Giustiniani M., Tinivella U., Parolai S., Donda F., Brancolini G., Volpi V. (2020). "Integrated Geophysical Analyses of Shallow-Water Seismic Imaging With Scholte Wave Inversion: The Northern Adriatic Sea Case Study", *Frontiers in Earth Science*, Vol. 8, p. 532. <https://www.frontiersin.org/article/10.3389/feart.2020.587898>
doi:10.3389/feart.2020.587898.
- INGV Seismological Data Centre (2006). Rete Sismica Nazionale (RSN). Istituto Nazionale di Geofisica e Vulcanologia (INGV), Italy. <https://doi.org/10.13127/SD/X0FXNH7QFY>.



NTC18: Ministero delle Infrastrutture e dei Trasporti (2018). Aggiornamento delle Norme Tecniche per le Costruzioni. Part 3.2.2: Categorie di sottosuolo e condizioni topografiche, Gazzetta Ufficiale n. 42 del 20 febbraio 2018 (in Italian).

Parolai S., Picozzi M., Richwalski S.M. and Milkereit C. (2005). "Joint inversion of phase velocity dispersion and H/V ratio curves from seismic noise recordings using a genetic algorithm, considering higher modes", *Geophysical Research Letters* 32, L01303. doi:10.1029/2004GL021115.

Regione del Veneto – Geoportale – <https://idt2.regione.veneto.it>.

Servizio Geologico d'Italia – Carta Geologica d'Italia scala 1:100.000 - sgi.isprambiente.it/geologia100k/mostra_foglio.aspx?numero_foglio=49.

Technical Commission SM, 2015 – Microzonazione sismica. Standard di rappresentazione e archiviazione informatica, Versione 4.0b (Commissione tecnica inter-istituzionale per la MS nominata con DPCM 21 aprile 2011).

Tokimatsu K., Tamura S. and Kojima H. (1992). "Effects of multiple modes on Rayleigh wave dispersion characteristics", *Journal of Geotechnical Engineering*, 118, pp. 1529–1543.

Wang R. (1999). "A simple orthonormalization method for stable and efficient computation of Green's functions", *Bulletin of the Seismological Society of America*, 89, pp. 733–741.

Yamanaka H. and Ishida H. (1996). "Application of generic algorithms to an inversion of surface-wave dispersion data", *Bulletin of the Seismological Society of America*, 86, pp. 436–444.

Zampieri D. (2000). "Segmentation and linkage of the Lessini Mountains normal faults, Southern Alps, Italy", *Tectonophysics*, 319, pp. 19-31.



Disclaimer and limits of use of information

The INGV, in accordance with the Article 2 of Decree Law 381/1999, carries out seismic and volcanic monitoring of the Italian national territory, providing for the organization of integrated national seismic network and the coordination of local and regional seismic networks as described in the agreement with the Department of Civil Protection.

INGV contributes, within the limits of its skills, to the evaluation of seismic and volcanic hazard in the Country, according to the mode agreed in the ten-year program between INGV and DPC February 2, 2012 (Prot. INGV 2052 of 27/2/2012), and to the activities planned as part of the National Civil Protection System. In particular, this document¹ has informative purposes concerning the observations and the data collected from the monitoring and observational networks managed by INGV. INGV provides scientific information using the best scientific knowledge available at the time of the drafting of the documents produced; however, due to the complexity of natural phenomena in question, nothing can be blamed to INGV about the possible incompleteness and uncertainty of the reported data.

INGV is not responsible for any use, even partial, of the contents of this document by third parties and any damage caused to third parties resulting from its use. The data contained in this document is the property of the INGV.

This study has benefited from funding provided by the Italian Presidenza del Consiglio dei Ministri – Dipartimento della Protezione Civile (DPC). This paper does not necessarily represent DPC official opinion and policies.

Esclusione di responsabilità e limiti di uso delle informazioni

L'INGV, in ottemperanza a quanto disposto dall'Art. 2 del D.L. 381/1999, svolge funzioni di sorveglianza sismica e vulcanica del territorio nazionale, provvedendo all'organizzazione della rete sismica nazionale integrata e al coordinamento delle reti sismiche regionali e locali in regime di convenzione con il Dipartimento della Protezione Civile.

L'INGV concorre, nei limiti delle proprie competenze inerenti la valutazione della Pericolosità sismica e vulcanica nel territorio nazionale e secondo le modalità concordate dall'Accordo di programma decennale stipulato tra lo stesso INGV e il DPC in data 2 febbraio 2012 (Prot. INGV 2052 del 27/2/2012), alle attività previste nell'ambito del Sistema Nazionale di Protezione Civile. In particolare, questo documento¹ ha finalità informative circa le osservazioni e i dati acquisiti dalle Reti di monitoraggio e osservative gestite dall'INGV. L'INGV fornisce informazioni scientifiche utilizzando le migliori conoscenze scientifiche disponibili al momento della stesura dei documenti prodotti; tuttavia, in conseguenza della complessità dei fenomeni naturali in oggetto, nulla può essere imputato all'INGV circa l'eventuale incompletezza ed incertezza dei dati riportati.

L'INGV non è responsabile dell'utilizzo, anche parziale, dei contenuti di questo documento da parte di terzi e di eventuali danni arrecati a terzi derivanti dal suo utilizzo. La proprietà dei dati contenuti in questo documento è dell'INGV.

Lo studio presentato ha beneficiato del contributo finanziario della Presidenza del Consiglio dei Ministri – Dipartimento della Protezione Civile; la presente pubblicazione, tuttavia, non riflette necessariamente la posizione e le politiche ufficiali del Dipartimento.



This document is licensed under License

Attribution – No derivatives 4.0 International (CC BY-ND 4.0)

¹This document is level 3 as defined in the "Principi della politica dei dati dell'INGV (D.P. n. 200 del 26.04.2016)"